

PARK PLACE MALL  
STOREFRONT #214

GENERAL NOTES:

- PLEASE NOTE:  
POSITIONING OF SPACE,  
WALLS, DIMENSIONS,  
AND ASSET LOCATIONS  
ARE APPROXIMATE.  
THEY ARE NOT TO BE  
INTERPRETED  
LITERALLY, BUT  
RATHER CONCEPTUALLY.

- DESIGNERS ARE NOT  
RESPONSIBLE FOR  
MISREPRESENTATION OF  
ASSETS, STRUCTURE,  
OR INFRASTRUCTURE.

SPACE & STAGE  
LAYOUT & DIM.

SOUND DESIGNER:  
TYLER A. BERG

ASST. S.D.:  
---

PRO. SOUND ENG.:  
TYLER A. BERG

DIRECTOR:  
CHRIS WILL

SCENIC DESIGNER:  
MIKE DUNN

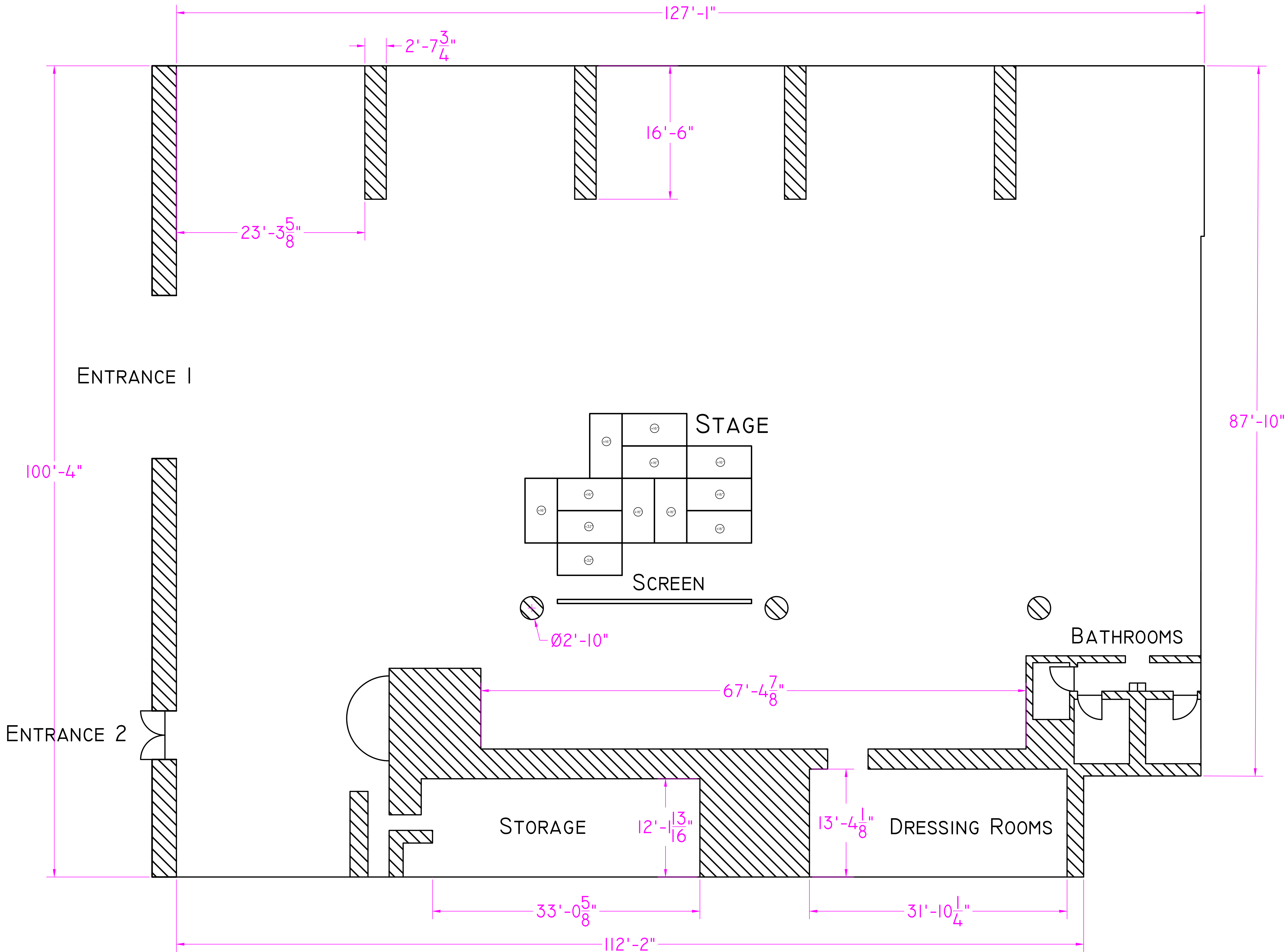
DRAFTSPERSON:  
T.A.B.

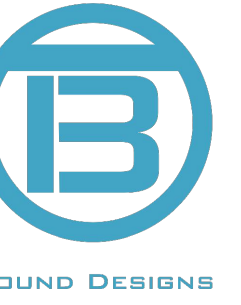
SCALE:  
3/16" = 1'-0"

REV. DATE:  
09.04.2020

PLATE:

AI





PARK PLACE MALL  
STOREFRONT #214

GENERAL NOTES:

- AUDIENCE PODS ARE SPACED TO ENSURE COMPLIANCE WITH SOCIAL-DISTANCING GUIDELINES. TWO TYPES ARE SUPPLIED: INDIVIDUAL PODS (6') AND GROUP PODS (8').
- THIS CONFIGURATION, NOT USING THE SLOTS ON THE BACK WALL, ALLOWS FOR ROUGHLY 48 PODS TOTAL.

AUDIENCE LAYOUT  
PODS (I)

SOUND DESIGNER:  
TYLER A. BERG

ASST. S.D.:  
---

PRO. SOUND ENG.:  
TYLER A. BERG

DIRECTOR:  
CHRIS WILL

SCENIC DESIGNER:  
MIKE DUNN

DRAFTSPERSON:  
T.A.B.

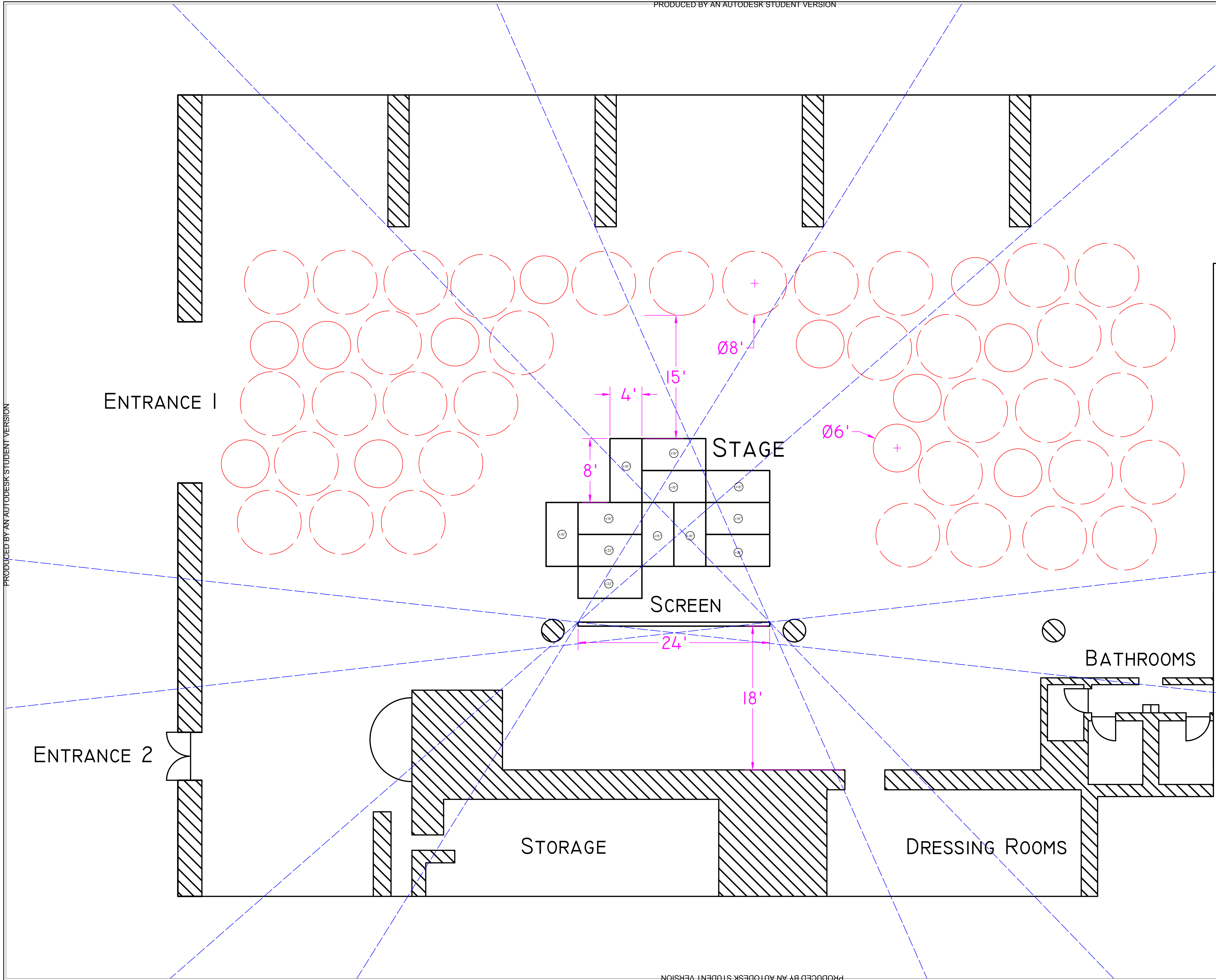
SCALE:  
3/16" = 1'-0"

REV. DATE:  
09.04.2020

PLATE:

A2

PRODUCED BY AN AUTODESK STUDENT VERSION





PARK PLACE MALL  
STOREFRONT #214

GENERAL NOTES:

- AUDIENCE PODS ARE SPACED TO ENSURE COMPLIANCE WITH SOCIAL-DISTANCING GUIDELINES. TWO TYPES ARE SUPPLIED: INDIVIDUAL PODS (6') AND GROUP PODS (8').

- THIS CONFIGURATION, USING THE SLOTS ON THE BACK WALL, ALLOWS FOR ROUGHLY 65 PODS TOTAL.

AUDIENCE LAYOUT  
PODS (2)

SOUND DESIGNER:  
TYLER A. BERG

ASST. S.D.:  
---

PRO. SOUND ENG.:  
TYLER A. BERG

DIRECTOR:  
CHRIS WILL

SCENIC DESIGNER:  
MIKE DUNN

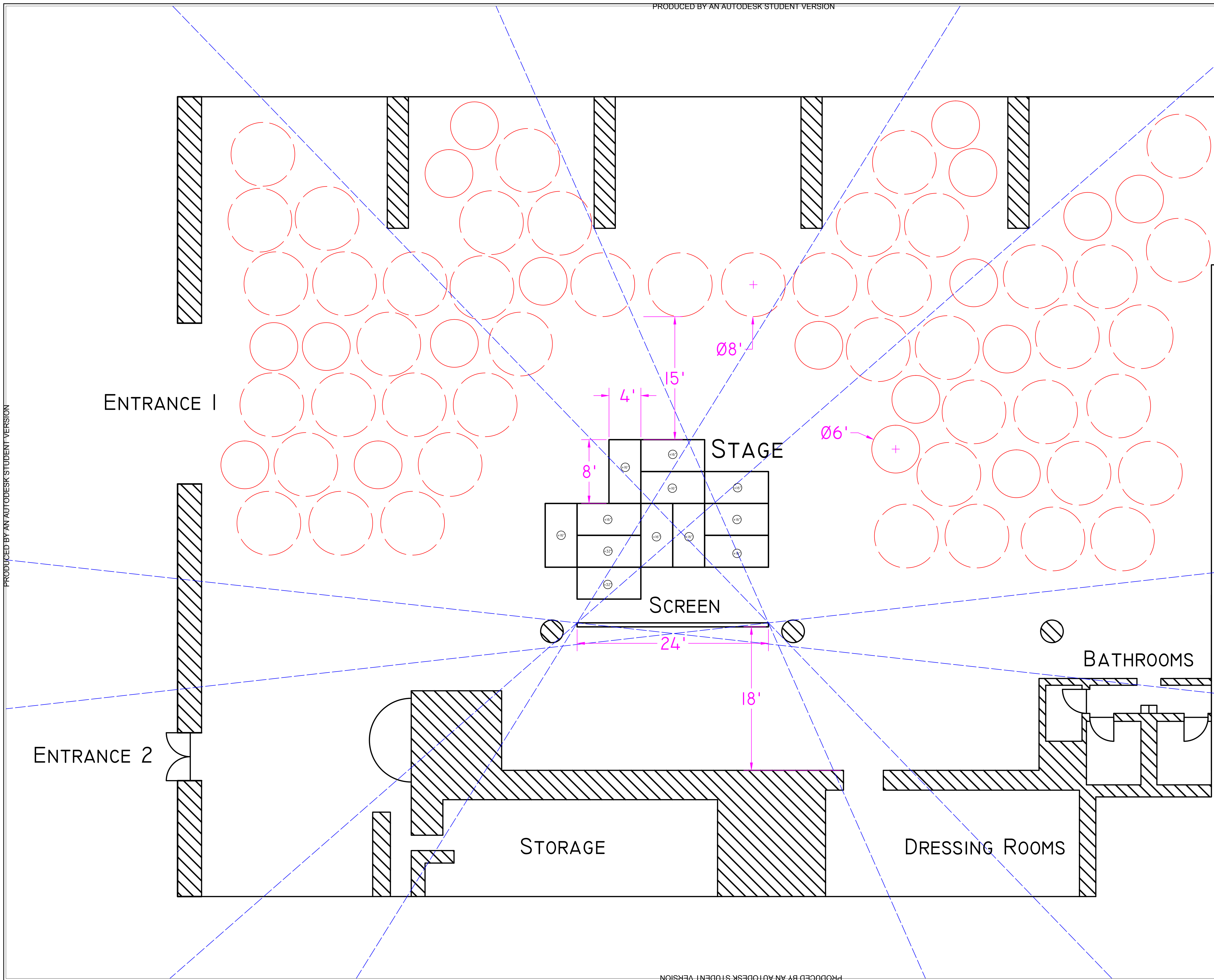
DRAFTSPERSON:  
T.A.B.

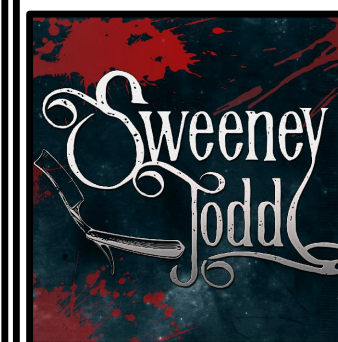
SCALE:  
3/16" = 1'-0"

REV. DATE:  
09.04.2020

PLATE:  
**A3**

PRODUCED BY AN AUTODESK STUDENT VERSION

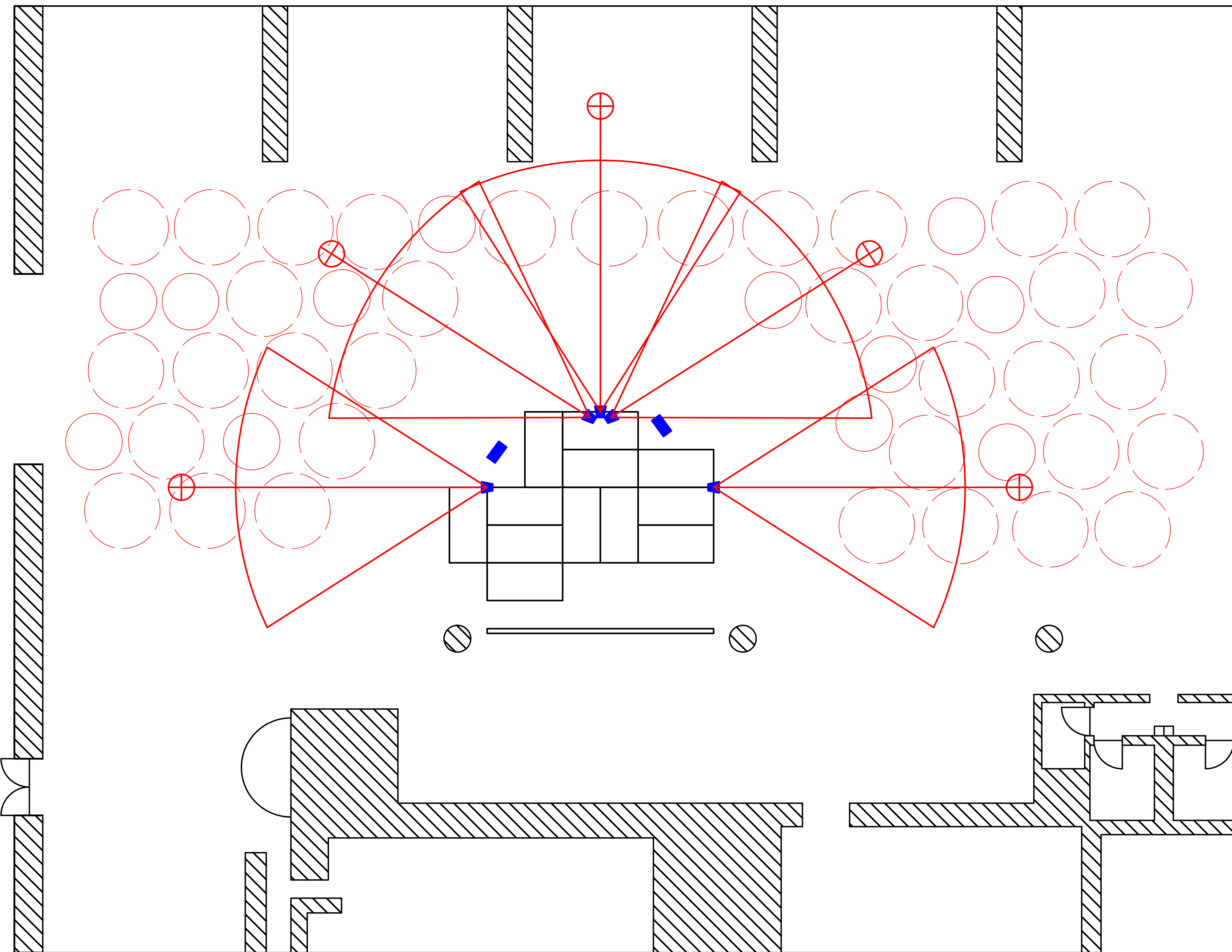




PARK PLACE MALL  
STOREFRONT #214

GENERAL NOTES:

- ROUGH PLACEMENT OF SPEAKERS IN SPACE.
- ATTEMPTS TO KEEP SPEAKERS OFF OF STAGE BLUEPRINT SHOWN



**SPEAKER  
PLOT**

SOUND DESIGNER:  
TYLER A. BERG

ASST. S.D.:  
---

PRO. SOUND ENG.:  
TYLER A. BERG

DIRECTOR:  
CHRIS WILL

SCENIC DESIGNER:  
MIKE DUNN

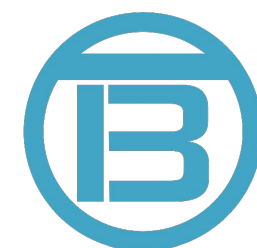
DRAFTSPERSON:  
T.A.B.

SCALE:  
3/16" = 1'-0"

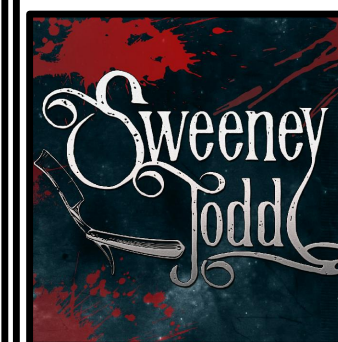
REV. DATE:  
09.04.2020

PLATE:

**CI**



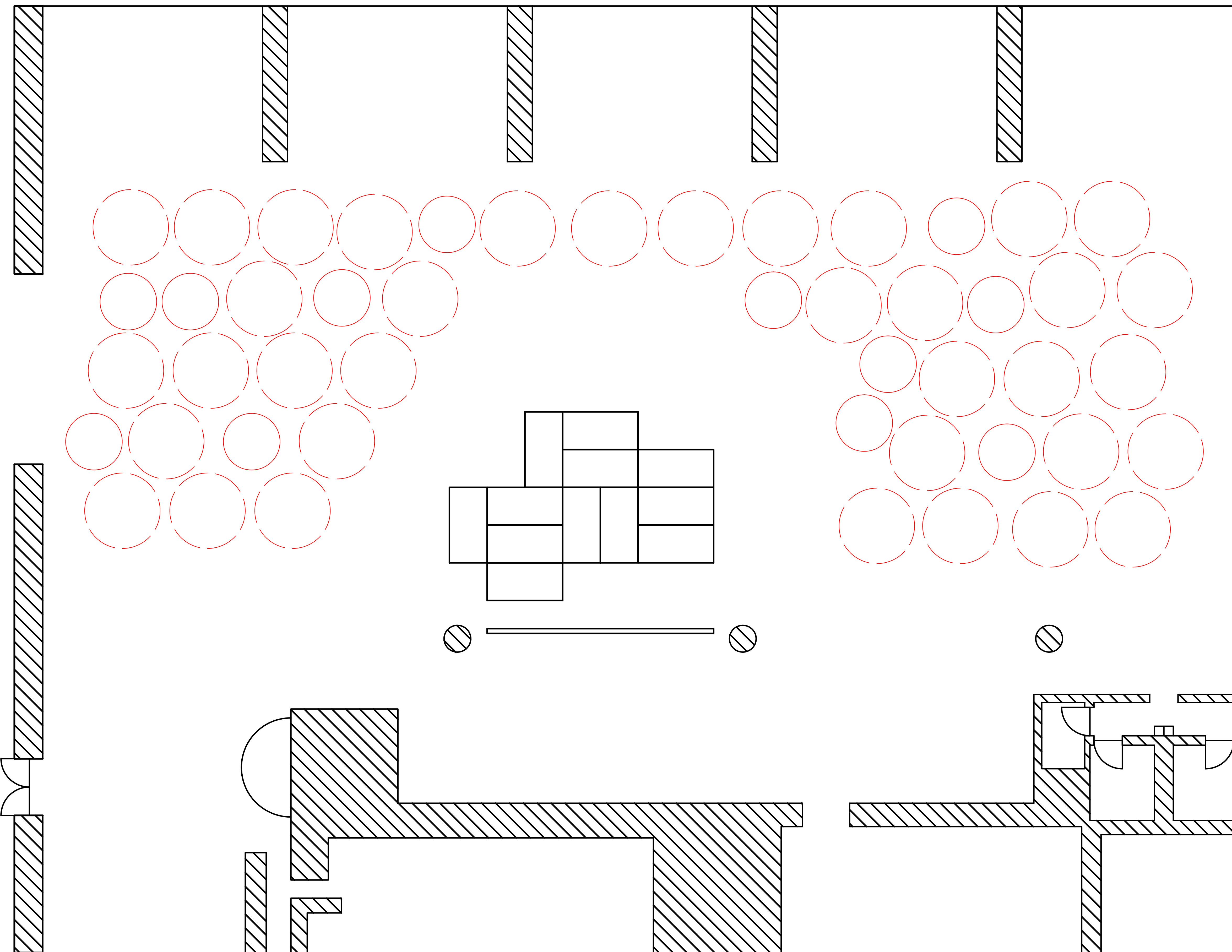
SOUND DESIGNS



PARK PLACE MALL  
STOREFRONT #214

GENERAL NOTES:

- ROUGH PLACEMENT OF SPEAKERS IN SPACE.
- ATTEMPTS TO KEEP SPEAKERS OFF OF STAGE BLUEPRINT SHOWN



**SPEAKER  
PLOT**

SOUND DESIGNER:  
TYLER A. BERG

ASST. S.D.:  
---

PRO. SOUND ENG.:  
TYLER A. BERG

DIRECTOR:  
CHRIS WILL

SCENIC DESIGNER:  
MIKE DUNN

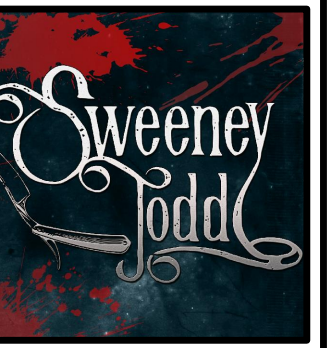
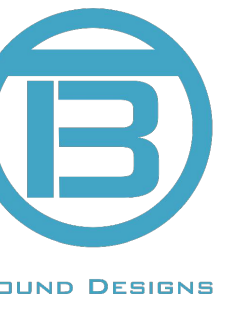
DRAFTSPERSON:  
T.A.B.

SCALE:  
3/16" = 1'-0"

REV. DATE:  
09.04.2020

PLATE:

**CI**

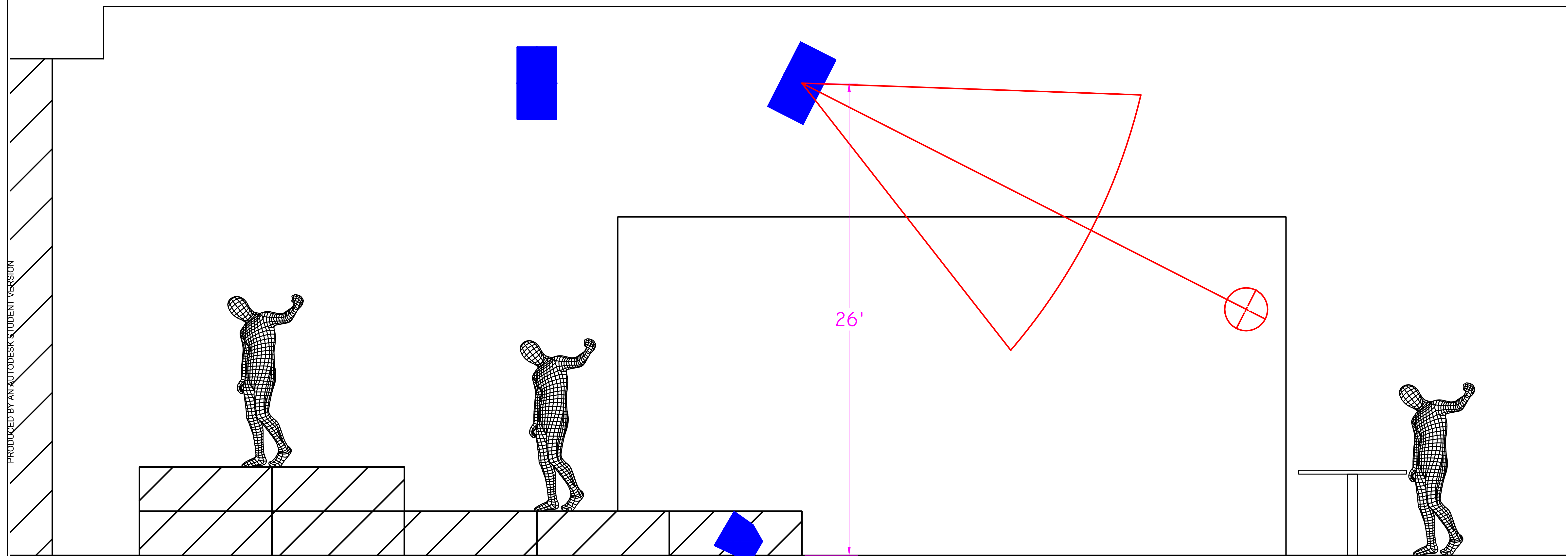


PARK PLACE MALL  
STOREFRONT #214

GENERAL NOTES:  
- COMMUNITY RS220  
SPEAKERS (5) FLOWN  
IN FROM CEILING TRUSS  
ABOVE FAKE CEILING

PRODUCED BY AN AUTODESK STUDENT VERSION

PRODUCED BY AN AUTODESK STUDENT VERSION



# SPEAKER PLOT SECTION

SOUND DESIGNER:  
TYLER A. BERG

ASST. S.D.:  
---

PRO. SOUND ENG.:  
TYLER A. BERG

DIRECTOR:  
CHRIS WILL

SCENIC DESIGNER:  
MIKE DUNN

DRAFTSPERSON:  
T.A.B.

SCALE:  
3/16" = 1'-0"

REV. DATE:  
09.04.2020

PLATE:  
**C2**